

Attachment 6

Scenario for Policy Development on Marine Resource Management Buleleng District, Bali

(First Stage: For Brainstorming And Discussed With Related Parties)

Goal: to develop a new decree for Buleleng District that will support coastal marine resource management (CMRM) for sustainable use through partnership with key decision makers both at the district and village level.

Role of LEAD

Facilitate the process of policy development, share relevant data and information as a baseline for policy development, assuring public consultation takes place as consensus and commitment toward collaborative management at the policy decision making process and at the implementation stage.

Scenario One Working with the Key Government Officials

Assumptions:

- Target Partners: Key Decision Makers at District Level (in line with efforts made at the village level).
- The key actors to involve: the Head of District, the Head of Department of Marine and Fishery at the District Level.

Entry Point:

- a) To do cultivation work with the Head of Buleleng District (Bupati)
Target: to get Bupati verbal commitment to proceed with coastal marine resources management policy (toward a new decree). Technical works will be followed up by Department of Marine and Fishery at District Level

Or

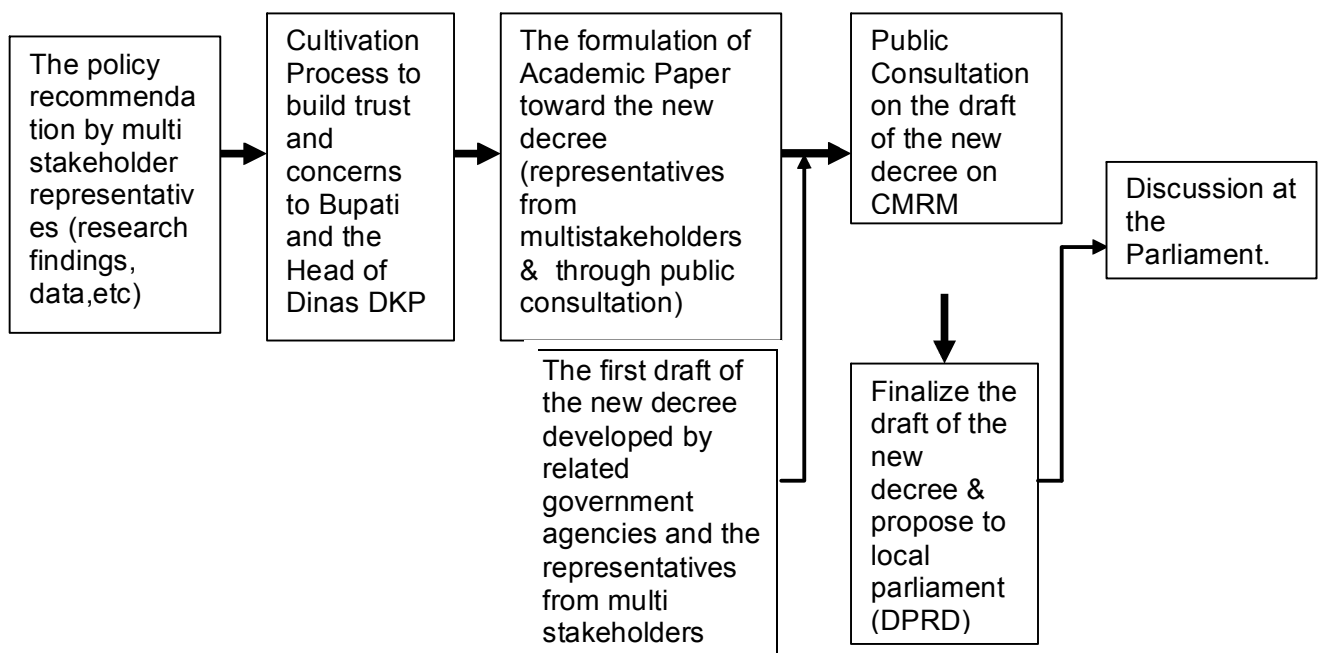
- b) To do cultivation work with the Head of Marine and Fishery at District Level first (Dinas DKP). Target: starting to analyse the situation and use data available as the basis to formulate the policy. At the same time, involving the Head of District in the process of formulating the new decree.

When the Head of District (Bupati) agrees to develop a policy on sustainable coastal marine resource management (CMRM): it is expected that Bupati will

issue a decree to assign a team who will formulate the draft of the new decree on CMRM.

When the Head of District does not show commitment to the idea, the work starts from the Head of Dinas DKP. Dinas DKP will be supported by a team of representatives from multi stakeholders (LEAD, NGOs, Community Groups, Reef Check, MAC and Academic Institution) who will facilitate Dinas DKP to formulate the draft of a new decree on CMRM. There will be no a decree to be assigned as official team to work in the process of policy formulation.

Stages for Policy Formulation on Marine Resources Management (MRM)



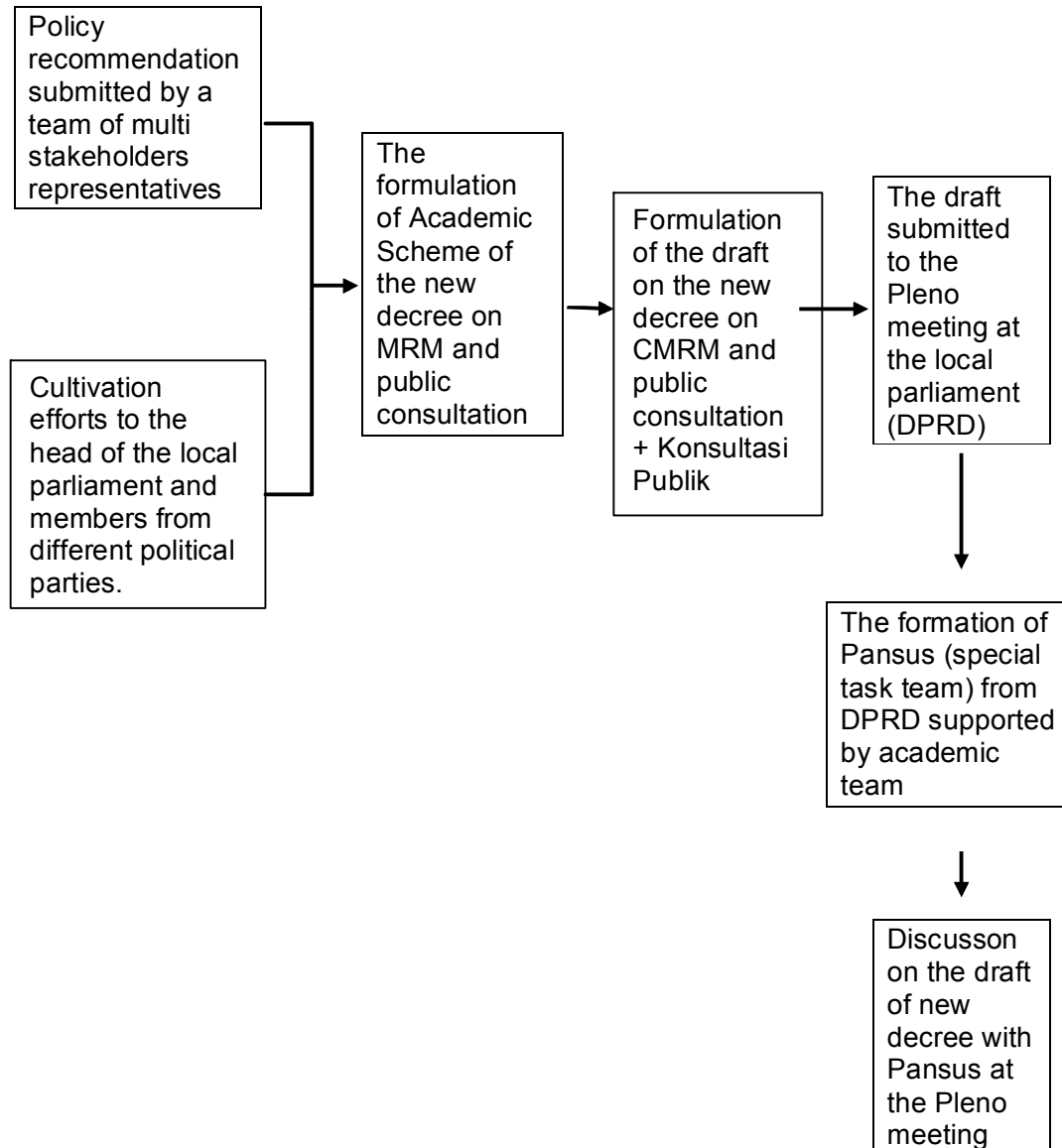
Scenario 2 Working with the local parliament strategic ally

Assumptions

While the process of new decree on MRM works at the village level, efforts should be made with the right ally at the local parliament agency and the local government agency of Buleleng district.

- The team of multi stakeholders representatives usually will be the partner to submit policy recommendations as the draft of the new decree on CMRM
- Target: to have 5 members from 5 political parties of the local parliament to support the policy formulation.

Stages for Policy Development toward new decree on MRM



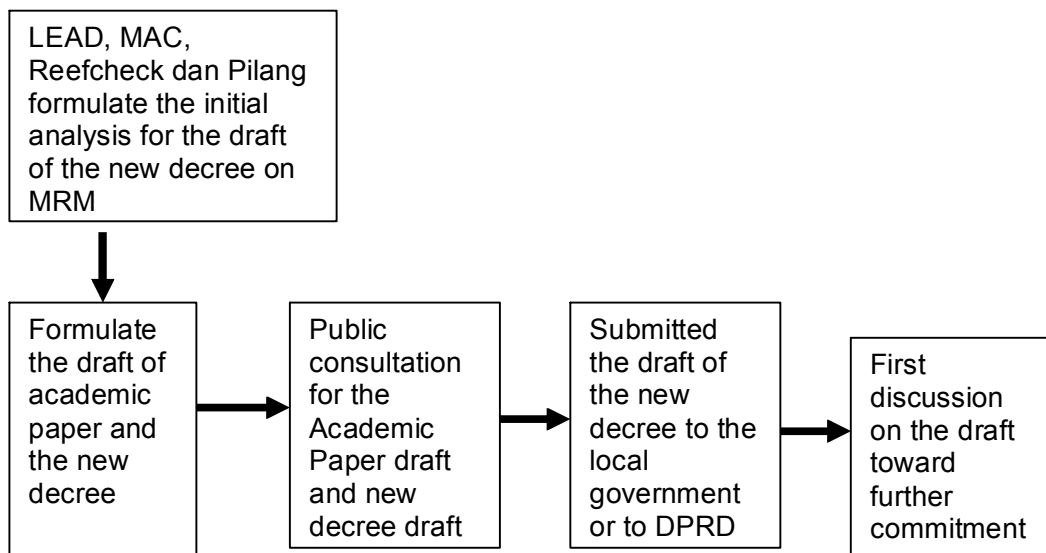
Scenario 3

Working independently to propose the Policy Recommendation as the Bupati, the KDP and DPRD do not show interests and strong commitment for a new decree regarding MRM.

Assumptions

- The local government of Buleleng district does not want to be involved and will only be involved in certain discussion./workshop
- DPRD does not show strong commitment to the idea of new decree on CMRM and will only attend certain discussions/workshops.
- The initiator (LEAD and partners) has to be pro active and take the lead to formulate the academic draft of the new decree and to submit the draft to the local government or to DPRD. The target: the CMRM proposal should be the main agenda in the meeting at government agency and DPRD meetings to ensure that they will proceed with the draft to become an official new decree.

Stages for Policy Development toward new decree on MRM





The follow up actions: assign Policy Development expert

- Having the insight of policy issues at Buleleng district, having the map of social, economic and political power
- Identify and develop strategic ally at community, village, sub district and district level
- Decide the most workable scheme on policy development process
- The policy development expert has to work with local key resources first before having the right strategy to implement.